

NFPA 214

Water- Cooling Towers

1988 Edition



NOTICE

All questions or other communications relating to this document should be sent only to NFPA Headquarters, addressed to the attention of the Committee responsible for the document.

For information on the procedures for requesting Technical Committees to issue Formal Interpretations, proposing Tentative Interim Amendments, proposing amendments for Committee consideration, and appeals on matters relating to the content of the document, write to the Secretary, Standards Council, National Fire Protection Association, Batterymarch Park, Quincy, MA 02269.

A statement, written or oral, that is not processed in accordance with Section 16 of the Regulations Governing Committee Projects shall not be considered the official position of NFPA or any of its Committees and shall not be considered to be, nor be relied upon as, a Formal Interpretation.

Users of this document should consult applicable Federal, State and local laws and regulations. NFPA does not, by the publication of this document, intend to urge action which is not in compliance with applicable laws and this document may not be construed as doing so.

Policy Adopted by NFPA Board of Directors on December 3, 1982

The Board of Directors reaffirms that the National Fire Protection Association recognizes that the toxicity of the products of combustion is an important factor in the loss of life from fire. NFPA has dealt with that subject in its technical committee documents for many years.

There is a concern that the growing use of synthetic materials may produce more or additional toxic products of combustion in a fire environment. The Board has, therefore, asked all NFPA technical committees to review the documents for which they are responsible to be sure that the documents respond to this current concern. To assist the committees in meeting this request, the Board has appointed an advisory committee to provide specific guidance to the technical committees on questions relating to assessing the hazards of the products of combustion.

Licensing Provision — This document is copyrighted by the National Fire Protection Association (NFPA).

1. Adoption by Reference — Public authorities and others are urged to reference this document in laws, ordinances, regulations, administrative orders or similar instruments. Any deletions, additions and changes desired by the adopting authority must be noted separately. Those using this method are requested to notify the NFPA (Attention: Secretary, Standards Council) in writing of such use. The term "adoption by reference" means the citing of title and publishing information only.

2. Adoption by Transcription — **A.** Public authorities with lawmaking or rule-making powers only, upon written notice to the NFPA (Attention: Secretary, Standards Council), will be granted a royalty-free license to print and republish this document in whole or in part, with changes and additions, if any, noted separately, in laws, ordinances, regulations, administrative orders or similar instruments having the force of law, provided that: (1) due notice of NFPA's copyright is contained in each law and in each copy thereof; and, (2) that such printing and republication is limited to numbers sufficient to satisfy the jurisdiction's lawmaking or rulemaking process. **B.** Once this NFPA Code or Standard has been adopted into law, all printings of this document by public authorities with lawmaking or rulemaking powers or any other persons desiring to reproduce this document or its contents as adopted by the jurisdiction in whole or in part, in any form, upon written request to NFPA (Attention: Secretary, Standards Council), will be granted a nonexclusive license to print, republish, and vend this document in whole or in part, with changes and additions, if any, noted separately provided that due notice of NFPA's copyright is contained in each copy. Such license shall be granted only upon agreement to pay NFPA a royalty. This royalty is required to provide funds for the research and development necessary to continue the work of NFPA and its volunteers in continually updating and revising NFPA standards. Under certain circumstances, public authorities with lawmaking or rulemaking powers may apply for and may receive a special royalty when the public interest will be served thereby.

3. Scope of License Grant — The terms and conditions set forth above do not extend to the index to this document.

(For further explanation, see the Policy Concerning the Adoption, Printing and Publication of NFPA Documents which is available upon request from the NFPA.)

Statement on NFPA Procedures

This material has been developed under the published procedures of the National Fire Protection Association, which are designed to assure the appointment of technically competent Committees having balanced representation. While these procedures assure the highest degree of care, neither the National Fire Protection Association, its members, nor those participating in its activities accepts any liability resulting from compliance or noncompliance with the provisions given herein, for any restrictions imposed on materials or processes, or for the completeness of the text.

NFPA has no power or authority to police or enforce compliance with the contents of this document and any certification of products stating compliance with requirements of this document is made at the peril of the certifier.

**INSIDE,
THE PROFESSIONAL
RESEARCH,
REVIEW,
OPINION,
DISCUSSION
AND REVISION
YOU
ORDERED FROM
NFPA**



NATIONAL FIRE PROTECTION ASSOCIATION

© 1988 NFPA. All Rights Reserved

NFPA 214
Standard on
Water-Cooling Towers
1988 Edition

This edition of NFPA 214, *Standard on Water-Cooling Towers*, was prepared by the Technical Committee on Water-Cooling Towers, and acted on by the National Fire Protection Association, Inc. at its Fall Meeting held November 9-11, 1987 in Portland, Oregon. It was issued by the Standards Council on December 2, 1987, with an effective date of December 22, 1987, and supersedes all previous editions.

The 1987 edition of this standard has been approved by the American National Standards Institute.

Changes other than editorial are indicated by a vertical rule in the margin of the pages on which they appear. These lines are included as an aid to the user in identifying changes from the previous edition.

Origin and Development of NFPA 214

The subject of the protection of water-cooling towers was first considered by the NFPA Committee on Building Construction in 1957 and a progress report on that subject was published in the Advance Reports of that year. In 1958, a new Committee on Water-Cooling Towers was appointed and a Tentative Standard on Fire Protection of Water-Cooling Towers proposed by the Committee was adopted by the Association in that year. Final adoption was secured in 1959. Revised editions were published in 1961, 1966, 1968, 1971, 1976, 1977, and 1983.

Technical Committee on Water-Cooling Towers

James M. Connolly, M & M Protection Consultants
John A. Nelson, Marley Cooling Tower Co.

Thomas V. Rodante, Caltex Petroleum Corp.
Rep. American Petroleum Inst.
Silvio R. Zuniga, Factory Mutual Research Corp.

Alternate

Robert J. Smith, Jr., M & M Protection Consultants
(Alternate to J. M. Connolly)

Richard Bielen, NFPA Staff Liaison

This list represents the membership at the time the Committee was balloted on the text of this edition. Since that time, changes in the membership may have occurred.

NOTE: Membership on a Committee shall not in and of itself constitute an endorsement of the Association or any document developed by the Committee on which the member serves.

Contents

Foreword	214	4
Chapter 1 General	214	4
1-1 Scope	214	4
1-2 Definitions	214	4
Chapter 2 Location of Cooling Towers	214	5
Chapter 3 Electrical Equipment and Wiring	214	5
Chapter 4 Internal Combustion Engine Driven Fans	214	5
Chapter 5 Fire Protection	214	6
5-1 General	214	6
5-2 Fire Protection System Design	214	6
5-3 Corrosion Protection	214	8
5-4 Hydrant Protection	214	8
5-5 Standpipe Protection	214	8
5-6 Water Supply	214	8
5-7 Lightning Protection	214	8
5-8 Earthquake Protection	214	8
Chapter 6 Maintenance	214	8
Chapter 7 Referenced Publications	214	9
Appendix A Notes	214	9
Appendix B Illustrations	214	10
Appendix C Referenced Publications	214	17
Index	214	17

NFPA 214**Standard on****Water-Cooling Towers****1988 Edition**

The fire record of water-cooling towers indicates the failure to recognize the extent or seriousness of the potential fire hazard of these structures both while in operation or when temporarily shut down. Cooling towers of combustible construction, especially those of the induced draft type, present a potential fire hazard even when in full operation because of the existence of relatively dry areas within the towers.

A significant percentage of fires in water-cooling towers of combustible construction are caused by ignition from outside sources such as incinerators, smokestacks, or exposure fires. Fires in cooling towers may create an exposure hazard to adjacent buildings and processing units. Therefore, distance separation from buildings and sources of ignition or the use of noncombustible construction are primary considerations in preventing these fires.

Ignition within these structures can be caused by welding or cutting operations, smoking, overheated bearings, electrical failures, and other heat- or spark-producing sources.

Fires have also occurred during the construction of cooling towers. Measures must be taken during construction to prevent the accumulation of combustible waste materials such as wood borings, shavings, scrap lumber, or other easily ignited materials. "No Smoking" regulations and strict control of welding and other heat- or spark-producing operations must be enforced. Wetting down combustible portions of the tower during idle periods of construction is a good fire prevention practice.

Cooling water supplied to heat exchangers used for cooling flammable gases or liquids or combustible liquids where the cooling water pressure is less than that of the material being cooled may constitute an unusual hazard to the cooling tower by the return of the flammables or combustibles to the cooling tower water distribution system.

NOTICE: An asterisk (*) following the number or letter designating a paragraph indicates explanatory material on that paragraph in Appendix A. Information on referenced publications can be found in Chapter 7 and Appendix C.

Chapter 1 General**1-1 Scope.**

1-1.1 This standard applies to fire protection for field-erected water-cooling towers of combustible construction or those in which the fill is of combustible material. It does not apply to small factory-assembled towers, the main structure of which has a volume of 2000 cu ft (56.6 m³) or less.

1-1.2 Cooling tower designs that differ from the sketches and schematics illustrated in Appendix B may require special engineering judgment and design for fire protection.

1-2 Definitions.

Air Travel. The horizontal distance through the fill measured just below the distribution basin.

Approved. Acceptable to the "authority having jurisdiction."

NOTE: The National Fire Protection Association does not approve, inspect or certify any installations, procedures, equipment, or materials nor does it approve or evaluate testing laboratories. In determining the acceptability of installations or procedures, equipment or materials, the authority having jurisdiction may base acceptance on compliance with NFPA or other appropriate standards. In the absence of such standards, said authority may require evidence of proper installation, procedure or use. The authority having jurisdiction may also refer to the listings or labeling practices of an organization concerned with product evaluations which is in a position to determine compliance with appropriate standards for the current production of listed items.

Authority Having Jurisdiction. The "authority having jurisdiction" is the organization, office or individual responsible for "approving" equipment, an installation or a procedure.

NOTE: The phrase "authority having jurisdiction" is used in NFPA documents in a broad manner since jurisdictions and "approval" agencies vary as do their responsibilities. Where public safety is primary, the "authority having jurisdiction" may be a federal, state, local or other regional department or individual such as a fire chief, fire marshal, chief of a fire prevention bureau, labor department, health department, building official, electrical inspector, or others having statutory authority. For insurance purposes, an insurance inspection department, rating bureau, or other insurance company representative may be the "authority having jurisdiction." In many circumstances the property owner or his designated agent assumes the role of the "authority having jurisdiction"; at government installations, the commanding officer or departmental official may be the "authority having jurisdiction."

Combustible. Material other than noncombustible material.

Cooling Tower Classifications. (See *Figures B-1 through B-4, Appendix B.*)

Counterflow. A cooling tower in which the water flows counter-current to the airflow.

Crossflow. A cooling tower in which the airflow is essentially perpendicular to the flow of water.

Labeled. Equipment or materials to which has been attached a label, symbol or other identifying mark of an organization acceptable to the "authority having jurisdiction" and concerned with product evaluation, that maintains periodic inspection of production of labeled equipment or materials and by whose labeling the manufacturer indicates compliance with appropriate standards or performance in a specified manner.

Listed. Equipment or materials included in a list published by an organization acceptable to the "authority having jurisdiction" and concerned with product evaluation, that maintains periodic inspection of production of listed equipment or materials and whose listing states either that the equipment or material meets appropriate standards or has been tested and found suitable for use in a specified manner.

NOTE: The means for identifying listed equipment may vary for each organization concerned with product evaluation, some of which do not recognize equipment as listed unless it is also labeled. The "authority having jurisdiction" should utilize the system employed by the listing organization to identify a listed product.

Mechanical Draft. A cooling tower in which air movement depends on fans or blowers. When the fans or blowers are at the air inlet, the tower is considered forced draft. When the fans or blowers are at the air exit, the tower is considered induced draft.

Natural Draft. A cooling tower in which air movement depends on the difference in densities of the heated air inside the tower and the cooler air outside. Natural draft towers contain no fans or blowers.

Noncombustible. A material that, in the form in which it is used and under the conditions anticipated, will not ignite, burn, support combustion, or release flammable vapors, when subjected to fire or heat. Materials reported as noncombustible, when tested in accordance with ASTM E 136, *Standard Method of Test for Noncombustibility of Elementary Materials*, shall be considered noncombustible materials.

Shall. Indicates a mandatory requirement.

Should. Indicates a recommendation or that which is advised but not required.

Chapter 2 Location of Cooling Towers

2-1 Cooling towers with combustible exterior surfaces, including the deck, distribution basins, etc., shall be located at least 100 ft (30.5 m) from the following hazards:

(a) Structures or processes that emit sparks or flying brands under ordinary circumstances, such as chimneys, incinerators, flare stacks, or cob burners.

(b) Materials or processes of severe fire hazard, such as petroleum processing and storage tanks, explosives manufacturing or storage, and petroleum products pipelines and pumping stations.

2-2 Towers with combustible exterior surfaces and provided with fixed exposure protection in accordance with 5-2.8 of this standard may be located closer than 100 ft (30.5 m) from the hazards listed in Section 2-1 (a) and (b).

2-3 Towers with noncombustible exterior surfaces shall be located 40 ft (12.2 m) or more from the hazards listed in Section 2-1 (a) and (b).

2-4 Towers with noncombustible exterior surfaces and provided with fixed interior fire protection installed in accordance with Chapter 5 of this standard may be located closer than 40 ft (12.2 m) from the hazards listed in Section 2-1 (a) and (b).

2-5 Combustible cooling towers located on building roofs or other locations to which access for manual fire fighting is restricted or difficult shall be provided with a protection system in accordance with Chapter 5 of this standard.

2-6* Open Areas or Spaces Under Towers.

Chapter 3 Electrical Equipment and Wiring

3-1 Installation of all electrical equipment and wiring pertaining to water-cooling towers shall be in accordance with NFPA 70, *National Electrical Code*®.

3-2* Electric motors driving fans shall be provided with overcurrent protective devices as recommended by NFPA 70, *National Electrical Code*.

3-3 A remote fan motor switch shall be provided to stop the fan in case of fire.

3-4 When a fire protection system is installed, provision shall be made to interlock the fan motors with the sprinkler system (*see* 5-2.7.2).

3-5 An automatic vibration-controlled switch shall be provided to automatically shut down fan motors.

Chapter 4 Internal Combustion Engine Driven Fans

4-1 Electric motors or steam turbines are the preferred drives to operate fans on cooling towers. When neither is available, internal combustion engines may be used, provided they are installed, used and maintained in accor-

dance with NFPA 37, *Standard for the Installation and Use of Stationary Combustion Engines and Gas Turbines*.

Chapter 5 Fire Protection

5-1 General.

5-1.1* The following are some of the factors that shall be considered in determining the extent and method of fire protection of induced draft and natural draft cooling towers:

- (a) Importance to continuity of operation.
- (b) Size and construction of tower.
- (c) Type of tower.
- (d) Location of tower.
- (e) Water supply.
- (f) Value of tower.

5-1.2* Depending on factors indicated above where a fire protection system is required, one of the following general types of systems shall be used:

- (a) Open-head deluge system.
- (b) Closed-head dry-pipe system.
- (c) Wet-pipe automatic sprinkler system.

5-1.3 Complete Plans and Data Required. A complete plan showing piping arrangement; location of sprinklers; fixed detectors; operating equipment such as valves, deluge valves, etc., together with hydraulic calculations, water requirements, and water supply information, shall be submitted to the authority having jurisdiction for approval before installation. Plans shall be drawn to scale and include the details necessary to indicate clearly all of the equipment and its arrangement. Plans shall show location of new work with relation to existing structures, cooling towers, and water supplies. Plans shall include a note listing the types of materials used in the system.

5-2 Fire Protection System Design.

5-2.1 Types of Systems.

5-2.1.1 The counterflow tower design lends itself to either closed- or open-head systems. Therefore, wet-pipe, dry-pipe, or deluge systems may be used. Where water supplies are adequate, the deluge system provides a higher degree of protection.

5-2.1.2 The crossflow design is such that it is difficult to locate sprinklers in the most desirable spots for both water distribution and heat detection. This situation can be solved by separating these two functions and using separate water discharge and detection systems. The open-head deluge system does this and, therefore, is the type to be used in crossflow towers.

5-2.2 Minimum Rate of Application.

5-2.2.1 Under the fan decks of counterflow towers, the rate of application of water shall be 0.5 gpm/sq ft (20.4 L/min:m²) (including fan opening).

5-2.2.2 Under the fan decks of crossflow towers, the rate of application of water shall be 0.33 gpm/sq ft (13.45 L/min:m²) (including fan opening).

5-2.2.3 Over the fill areas of crossflow towers, the rate of application of water shall be 0.5 gpm/sq ft (20.4 L/min:m²).

5-2.3 Types and Locations of Discharge Outlets.

5-2.3.1 In counterflow towers, the discharge outlets shall be located under the fan deck and fan opening (see *Figures B-5 through B-8*).

5-2.3.2 In crossflow towers, the discharge outlets protecting the plenum area shall be located under the fan deck and in the fan opening. Discharge outlets protecting the fill shall be located under the distribution basin on either the louver or drift eliminator side, discharging horizontally through the joist channels (see *Figures B-9 through B-12*). On towers with a fill air travel greater than 18 ft (5.5 m), the outlets shall be located on opposite sides of the basins, in alternate joist channels. Where joist channels are wider than 2 ft (.6 m), more than one discharge device may be required per joist channel.

5-2.3.3* On towers having extended fan decks that completely enclose the distribution basin, the discharge outlets protecting the fill area shall be located over the basin, under the extension of the fan deck. These discharge outlets shall be open directional spray nozzles arranged to discharge 0.35 gpm/sq ft (14.26 L/min:m²) directly on the distribution basin, and 0.15 gpm/sq ft (6.11 L/min:m²) on the underside of the fan deck extension (see *Figures B-13 and B-14*). On towers having extended fan decks that do not completely enclose the hot water basin, outlets protecting the fill shall be located under the distribution basin as set out in 5-2.3.2 of this standard.

5-2.4 Pipe and Fittings.

5-2.4.1* Piping or tubing used within the cooling tower shall be metallic and approved for fire protection use.

Exception: Piping or tubing used for pneumatic detection systems may be of other materials suitable for use in a cooling tower environment.

5-2.4.2 Pipe sizing shall be based on hydraulic calculations to give an even distribution of water throughout the protected area. The flow from any one discharge outlet shall not vary from the specified rate of application by more than 15 percent above the specified density, and no outlet shall discharge less than the specified density.

5-2.4.3 Hydraulic calculations shall be made in accordance with Chapter 7 of NFPA 13, *Standard for the Installation of Sprinkler Systems*.

5-2.4.4 All fittings shall be of a type specifically approved for fire protection use. In dry sections of the system piping, which may be exposed to possible fire conditions, ferrous fittings shall be of steel, malleable iron, or ductile iron.

Exception: Cast iron fittings may be used in pneumatic detection piping.

5-2.4.5 Approved gasketed groove-type fittings are acceptable to connect pipe in fire-exposed areas where the fire protection system is automatically operated.

5-2.5* Hangers.

5-2.5.1* In general, piping shall be supported in accordance with the requirements of Section 3-15, NFPA 13, *Standard for the Installation of Sprinkler Systems*.

5-2.5.2 Where piping is supported from structural members of a cooling tower, the attachment shall be made so that the structural member is not split or otherwise damaged.

5-2.6 Valves.

5-2.6.1 Shutoff Valves. Each system shall be provided with a shutoff valve so located as to be readily accessible during a fire in the area the system protects or adjacent areas, or, for systems installed for fire prevention, during the existence of the contingency for which the system is installed.

5-2.6.2 Automatically Controlled Valves.

(a) Automatically controlled valves shall be as close to the hazard protected as accessibility during the emergency will permit, so that a minimum of piping is required between the automatic valve and the spray nozzles.

(b) Remote manual tripping devices, where required, shall be conspicuously located where readily accessible during the emergency and adequately identified as to the system controlled.

5-2.7 Strainers. Strainers are required for systems utilizing nozzles with waterways less than nominal $\frac{3}{8}$ in. (9.5 mm). (See NFPA 15, *Standard for Water Spray Fixed Systems for Fire Protection*, for further details.)

5-2.8* Heat Detectors. (See applicable sections of NFPA 72E, *Standard on Automatic Fire Detectors*, for additional information.)

5-2.8.1 Where deluge systems are used, an adequate number of heat detectors shall be installed.

5-2.8.2 In mechanical induced-draft towers, heat detectors shall be located under the fan deck at the circumference of the fan opening and under the fan opening when necessary to comply with the following spacing requirements. (For extended fan decks, see 5-2.8.3.)

5-2.8.2.1 Fixed-temperature detectors shall be spaced not over 8 ft (2.4 m) apart in any direction including the fan opening. Temperature ratings shall be selected in accordance with operating conditions, but shall be no less than intermediate.

5-2.8.2.2 Rate-of-rise detectors shall be spaced not over 15 ft (4.6 m) apart in any direction. In pneumatic-type systems, for detectors inside the tower, there shall be no more than one detector for each mercury check in towers operating in cold climates, and two detectors for each mercury check in towers used during the warm months

only or year-round in warm climates. There shall be no more than four detectors for each mercury check when the detectors are located outside the tower.

5-2.8.3 On towers having extended fan decks which completely enclose the distribution basin, detectors shall be located under the fan deck extension in accordance with standard indoor spacing rules for the type detectors used (see NFPA 72E, *Standard on Automatic Fire Detectors*).

Exception: Where the fan deck extension is 16 ft (4.9 m) or less and this dimension is the length of the joist channel, then only one row of detectors centered on and at right angles to the joist channels is required. Spacing between detectors shall be in accordance with NFPA 72E, Standard on Automatic Fire Detectors.

On towers having extended fan decks which do not completely enclose the hot water basin, detectors are not required under the fan deck extension.

5-2.8.4* Heat barriers shall be installed under the extended fan deck to separate deluge systems when the total number of systems exceeds the number for which the water supply was designed. Heat barriers shall extend from the fan deck structure to the distribution basin dividers.

5-2.8.5 Where heat detectors are inaccessible during tower operation, an accessible test detector shall be provided for each circuit. In the case of pilot-head-operated systems, an inspector's test connection shall be installed on the pilot line and arranged to be accessible during tower operation.

5-2.8.6 Heat detector components exposed to corrosive vapors or liquids shall be protected by materials of suitable construction or by suitable protective coatings applied by the equipment manufacturer.

5-2.9 Protection for Fan Drive Motor.

5-2.9.1 A heat detector and water discharge outlet shall be provided over each fan drive motor when the motor is located so that it is not within the protected area of the tower.

5-2.9.2 Provision shall be made to interlock the fan motors with the fire protection system so that the cooling tower fan motors will be stopped in the cell(s) for which the system is actuated. Where the continued operation of the fans is vital to the process, a manual override switch may be provided to reactivate the fan when it is determined that there is no fire.

5-2.10 Exposure Protection.

5-2.10.1 When any combustible exterior surfaces of a tower, including the fan deck, distribution basins, etc., are less than 100 ft (30.5 m) from significant concentrations of combustibles such as structures, piled material, etc., the combustible exposed surfaces of the tower shall be protected by an automatic water spray system.

5-2.10.2 Systems for exterior protection shall be designed with the same attention and care as interior

systems. Pipe sizing shall be based on hydraulic calculations. Water supply and discharge rate shall be based on a minimum 0.15 gpm/sq ft (6.11 L/min:m²) for all surfaces being protected.

5-2.11 The design and installations shall comply with the applicable sections of NFPA 13, *Standard for the Installation of Sprinkler Systems*.

5-3 Corrosion Protection.

5-3.1 Piping, fittings, hangers, braces, and attachment hardware including fasteners shall be hot dip galvanized steel per ASTM A 120-1984, *Standard Specification for Pipe, Steel, Black and Hot Dipped Zinc-Coated (Galvanized) Welded and Seamless, for Ordinary Uses*, for pipe and ASTM A 153-1982, *Standard Specification for Zinc Coating (Hot Dip) on Iron and Steel Hardware*, for fittings, hangers, braces, and hardware. Exposed pipe threads shall be protected against corrosion. All other components shall be corrosion resistant or protected against corrosion by a suitable coating.

5-3.2 Approved discharge devices are made of nonferrous material and are corrosion resistant to normal atmospheres.

Some atmospheres require special coatings on the discharge devices.

Wax-type coatings shall not be used on devices without fusible elements.

5-3.3 Special care shall be taken in the handling and installation of wax-coated or similar sprinklers to avoid damaging the coating. Corrosion-resistant coatings shall not be applied to the sprinklers by anyone other than the manufacturer of the sprinklers, except that in all cases any damage to the protective coating occurring at the time of installation shall be repaired at once using only the coating of the manufacturer of the sprinkler in an approved manner so that no part of the sprinkler will be exposed after the installation has been completed. Otherwise, corrosion will attack the exposed metal and will, in time, creep under the wax coating.

5-4* Hydrant Protection. Hydrants shall not be located closer than 40 ft (12.2 m) from towers.

5-5* Standpipe Protection. Towers with any combustible construction located on a building 50 ft (15.3 m) or more in height shall be provided with Class III standpipe protection (as defined in NFPA 14, *Standard for the Installation of Standpipe and Hose Systems*) within 200 ft (61.0 m) of all parts of the tower. Sufficient hose shall be provided to reach all parts of the tower. Provision shall be made for completely draining all exposed standpipe lines during winter. Hose equipment at each standpipe hose connection on the roof shall be protected from the weather in a suitable cabinet or enclosure. (See NFPA 14, *Standard for the Installation of Standpipe and Hose Systems*, for further details.)

5-6 Water Supply.

5-6.1* Water supply for towers two or more cells in length, with either one or two fans per cell, shall be adequate to supply all discharge outlets in the two largest ad-

jacent cells or systems simultaneously at the specified rate of application.

Exception: The water supply for one system may be considered adequate when tight continuous partitions having a fire resistance rating of 20 minutes or more when tested in accordance with NFPA 251, Standard Methods of Fire Tests of Building Construction and Materials, are provided between systems.

5-6.2 Water supplies shall be sufficient to include a minimum of 500 gpm (1892.5 L/min) for hose streams in addition to the sprinkler requirement.

5-7* Lightning Protection. Lightning protection, where provided, shall be installed in accordance with the provisions of NFPA 78, *Lightning Protection Code*.

5-8 Earthquake Protection. Where provided, earthquake-resistant construction shall be in accordance with applicable sections of NFPA 13, *Standard for the Installation of Sprinkler Systems*.

Chapter 6 Maintenance

6-1 Areas around towers located on the ground shall be kept free of grass, weeds, brush, or combustible waste materials.

6-2 Smoking shall not be permitted on or adjacent to any cooling tower of combustible construction. Signs to this effect shall be posted and maintained and this regulation strictly enforced.

6-3 Forced- and induced-draft towers in continuous operation shall be checked frequently for excessive heating in motors and for excessive fan vibration.

6-4 At least semiannually, the fan assemblies, including the motors and speed reducers, shall be checked, both during operation and when shut down, for excessive wear or vibration, improper lubrication, corrosion, or other features that could result in failure and, where conditions require, corrective action shall be taken.

6-5 Where work on the tower requires welding or cutting, it shall be done in accordance with NFPA 51B, *Standard for Fire Prevention in Use of Cutting and Welding Processes*.

6-6* Combustible cooling towers are particularly susceptible to ignition when they are shut down for repairs or other reasons and the wood becomes dried out. During these periods, all automatic fire protection on the tower shall be operable, or if the tower is not so protected, special protection shall be provided until the tower is back in service.

6-7 Access to the top of water-cooling towers for fire fighting and maintenance shall be provided by an approved stairway or ladder. Towers in excess of 120 ft (36.6 m) in any dimension shall be provided with not less than two means of access remote from each other.

6-8 Motors, speed reduction units, and drive shafts shall be accessible for servicing and maintenance.

6-8.1 Provisions shall be made for lockout or tagout of electric motors when maintenance work is being performed in the area of fans.

6-9 After maintenance work is completed, all scaffolding, boards, temporary supports, and other temporary materials shall be removed from the tower.

6-10 For proper maintenance of fire protection systems see NFPA 13A, *Recommended Practice for the Inspection, Testing, and Maintenance of Sprinkler Systems*.

Chapter 7 Referenced Publications

7-1 The following documents or portions thereof are referenced within this standard and shall be considered part of the requirements of this document. The edition indicated for each reference is the current edition as of the date of the NFPA issuance of this document.

7-1.1 NFPA Publications. National Fire Protection Association, Batterymarch Park, Quincy, MA 02269.

NFPA 13-1987, *Standard for the Installation of Sprinkler Systems*

NFPA 14-1986, *Standard for the Installation of Standpipe and Hose Systems*

NFPA 15-1985, *Standard for Water Spray Fixed Systems*

NFPA 24-1987, *Standard for the Installation of Private Fire Service Mains and Their Appurtenances*

NFPA 37-1984, *Standard for the Installation and Use of Stationary Combustion Engines and Gas Turbines*

NFPA 51B-1984, *Standard for Fire Prevention in Use of Cutting and Welding Processes*

NFPA 70-1987, *National Electrical Code*

NFPA 72E-1987, *Standard on Automatic Fire Detectors*

NFPA 78-1986, *Lightning Protection Code*

NFPA 251-1985, *Standard Method of Fire Tests of Building Construction and Materials*.

7-1.2 Other Publications.

7-1.2.1 ASTM Publications. American Society for Testing and Materials, 1916 Race Street, Philadelphia, PA 19103.

ASTM A 120-1984, *Standard Specification for Pipe, Steel, Black and Hot Dipped Zinc-Coated (Galvanized) Welded and Seamless, for Ordinary Uses*

ASTM A 153-1982, *Standard Specification for Zinc Coating (Hot Dip) on Iron and Steel Hardware*

ASTM E 136-1982, *Standard Method of Test for Non-combustibility of Elementary Materials*.

Appendix A

This Appendix is not a part of the requirements of this NFPA document but is included for information purposes only.

A-2-6 Open areas or space between a combustible cold water basin and the ground or roof of a building upon which it is located should be effectively screened to prevent the accumulation of waste combustible material under the tower, or to prevent the use of such areas or space under the tower for the storage of combustible material. Fire protection may be installed in lieu of screening.

A-3-2 Motors should be totally enclosed to protect them from dirt or moisture and to prevent sparks from reaching adjacent combustible construction.

A-5-1.1 Fire records for mechanical forced-draft towers do not indicate the general need for automatic fire protection systems. However, exposure protection may be necessary as provided in 5-2.10.

A-5-1.2 Antifreeze Sprinkler Systems. The use of antifreeze sprinkler systems in cooling towers is not recommended. While in theory this type of system would function, the use of antifreeze systems in cooling towers presents problems not encountered in usual antifreeze applications.

Due to the inaccessibility of the piping during normal operation of the cooling tower, it is practically impossible to do any maintenance work or to make routine inspections. The corrosion problem can be quite serious in cooling towers, and leaks in the system will not readily become apparent. This would result in loss of the antifreeze solution and could result in freezing up of the system.

Local ordinances in many areas prohibit the use of these systems.

A-5-2.3.3 Location of the nozzle from surfaces to be protected shall be determined by the particular nozzle's discharge characteristics. Care should also be taken in the selection of nozzles to obtain waterways which are not easily obstructed by debris, sediment, sand, etc., in the water.

A-5-2.4.1 Where plastic piping or tubing is used for pneumatic detection systems, consideration should be given to the effects of ultraviolet radiation.

A-5-2.5 In towers where sufficient vibration is anticipated that will cause movement of the fire protection system resulting in wear of water or detection piping or tubing at the hangers, it may be necessary to install vibration absorbers between the hangers and the pipe.

A-5-2.5.1 Special consideration should be given to the support of detection piping or tubing due to its small diameter. Thin-wall or nonmetallic pipe or tubing usually requires closer spacing of hangers for adequate support.

A-5-2.8 Due to the extremely humid atmosphere and potentially corrosive conditions in cooling towers, it is

very difficult to maintain electrical detection equipment. Experience has shown that even with weatherproof equipment and wiring practices an electrical system will malfunction frequently. Therefore, the information in the subparagraphs of this section is based on the use of detectors operating on pneumatic or hydraulic principles.

A-5-2.8.4 Acceptable materials are $\frac{3}{8}$ -in. (9.5-mm) plywood or $\frac{3}{16}$ -in. (4.8-mm) asbestos cement board on one side of studs.

A-5-4 Hydrant protection should be provided within 200 ft (61.0 m) of all parts of towers having combustible construction located on the ground or on buildings less than 50 ft (15.3 m) in height. A hose house and standard hose house equipment should be provided at each hydrant. (See NFPA 24, *Standard for the Installation of Private Fire Service Mains and Their Appurtenances*, for further details.)

A-5-5 Standpipes should preferably be located in stair towers. If located on an open roof, they should not be closer than 40 ft (12.2 m) to the cooling tower.

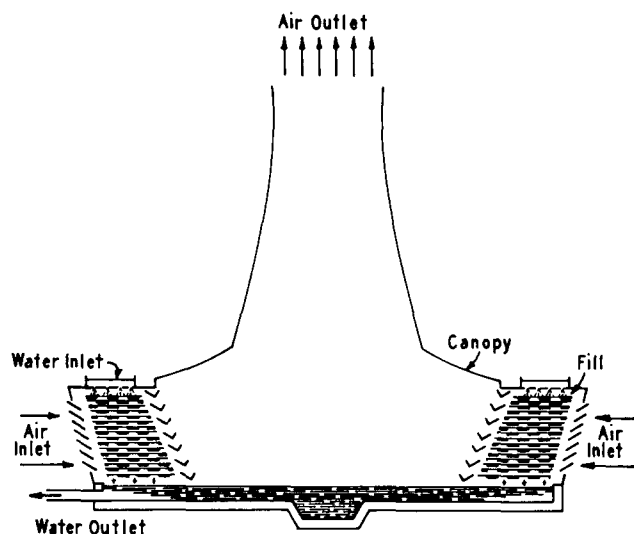
A-5-6.1 Types of construction that meet this requirement are $\frac{1}{2}$ -in. (12.7-mm) asbestos cement board, $\frac{1}{2}$ -in. (12.7-mm) plywood, or $\frac{3}{4}$ -in. (19.1-mm) tongue and groove boarding when installed on both sides of wood studs.

A-5-7 Towers located on roofs of buildings in certain geographical locations may be particularly susceptible to lightning damage.

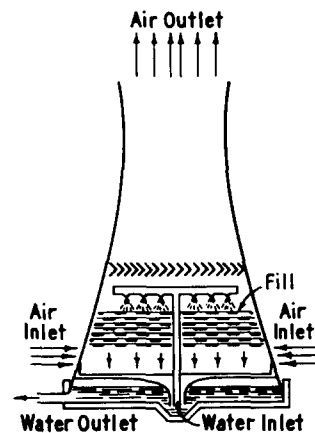
A-6-6 Examples of special protection are watch service or intermittent wetting, or both.

Appendix B

This Appendix is not a part of the requirements of this NFPA document but is included for information purposes only.



Crossflow hyperbolic tower



Counterflow hyperbolic tower

Figure B-1 Types of natural-draft towers.

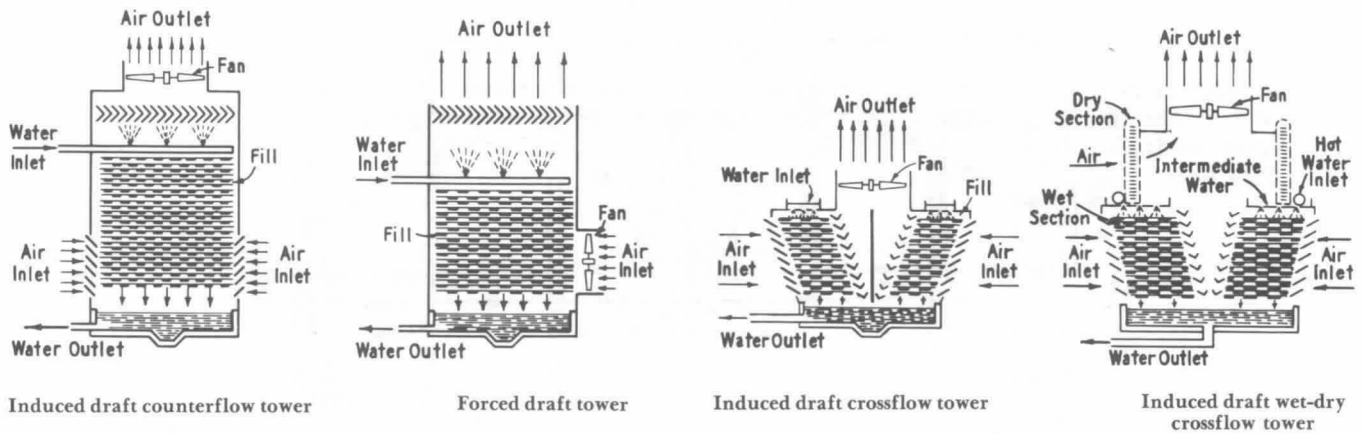


Figure B-2 Types of mechanical-draft towers.

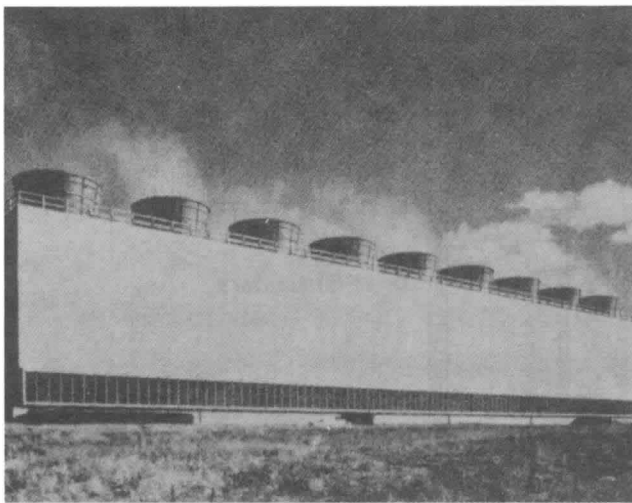


Figure B-3 Typical induced-draft counterflow water-cooling tower.

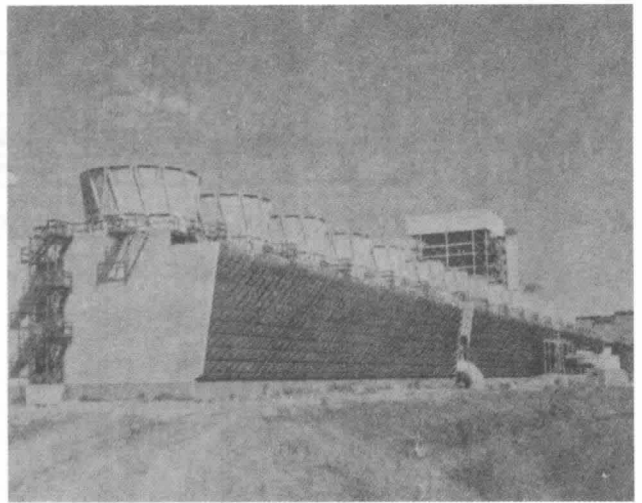


Figure B-4 Typical induced draft crossflow water-cooling tower.

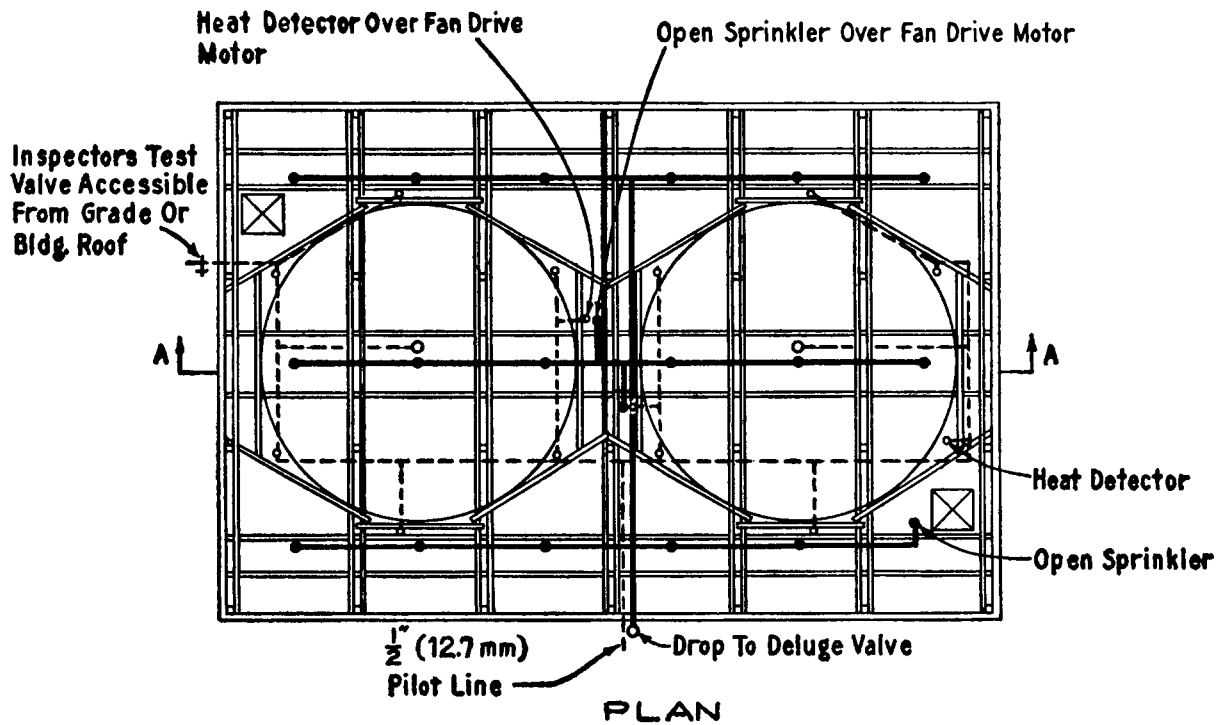


Figure B-5 Typical deluge fire protection arrangement for counterflow towers.

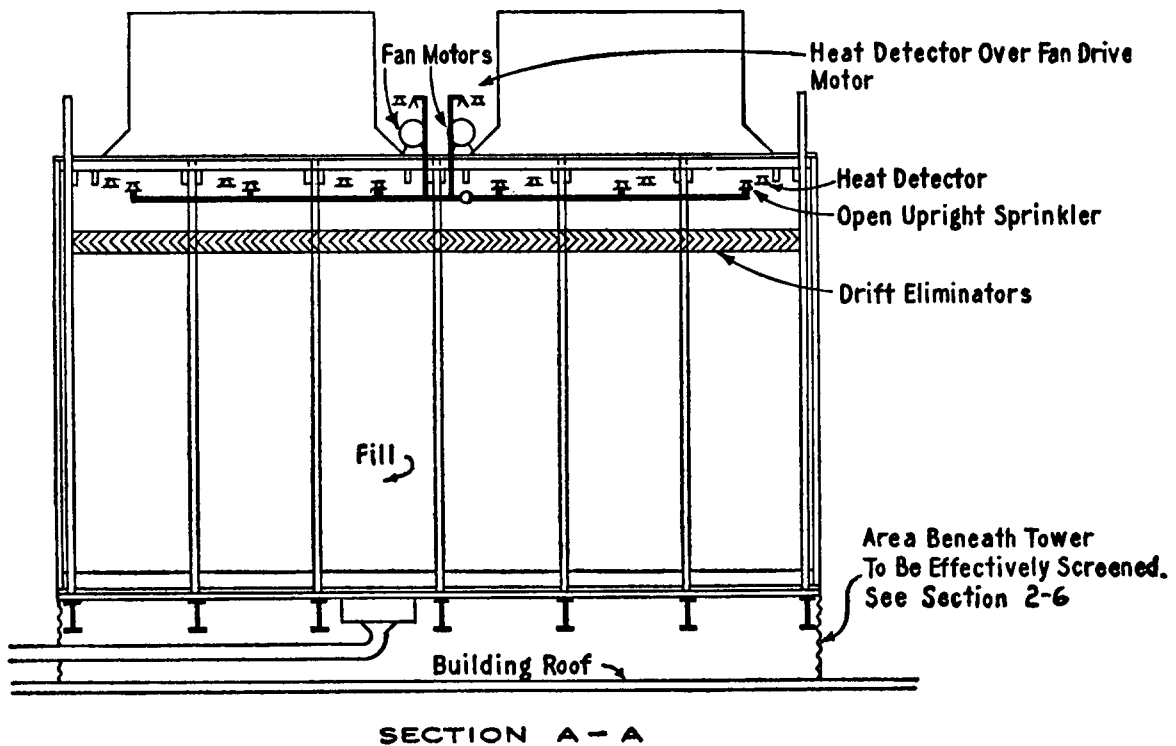


Figure B-6 Typical deluge fire protection arrangement for counterflow towers.

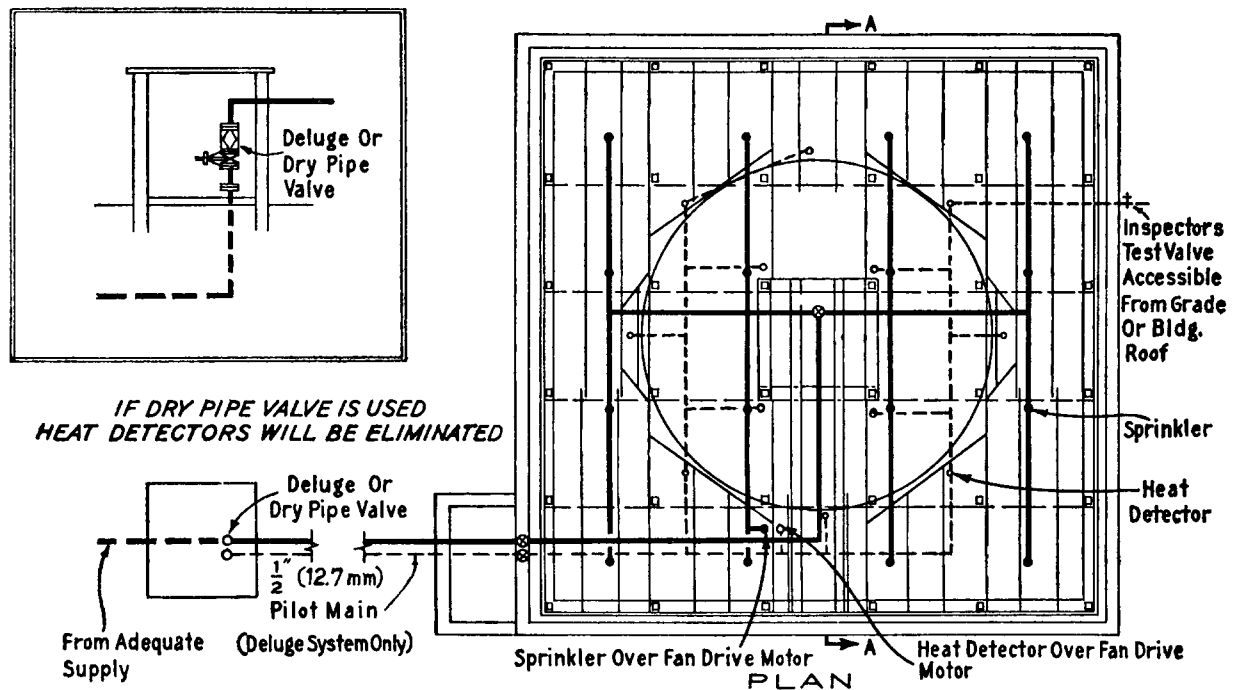


Figure B-7 Typical deluge or dry-pipe fire protection arrangement for counterflow towers.

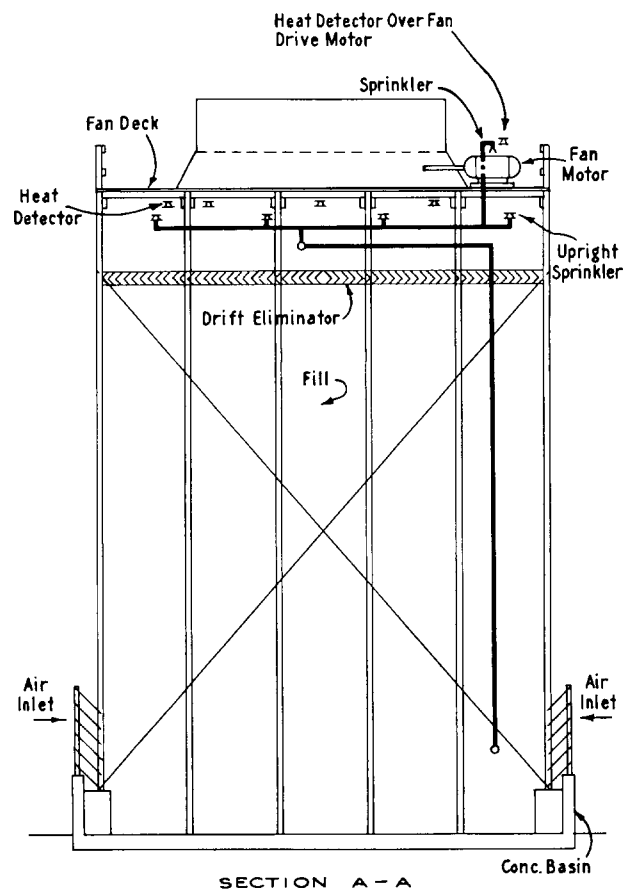


Figure B-8 Typical deluge or dry-pipe fire protection arrangement for counterflow towers.

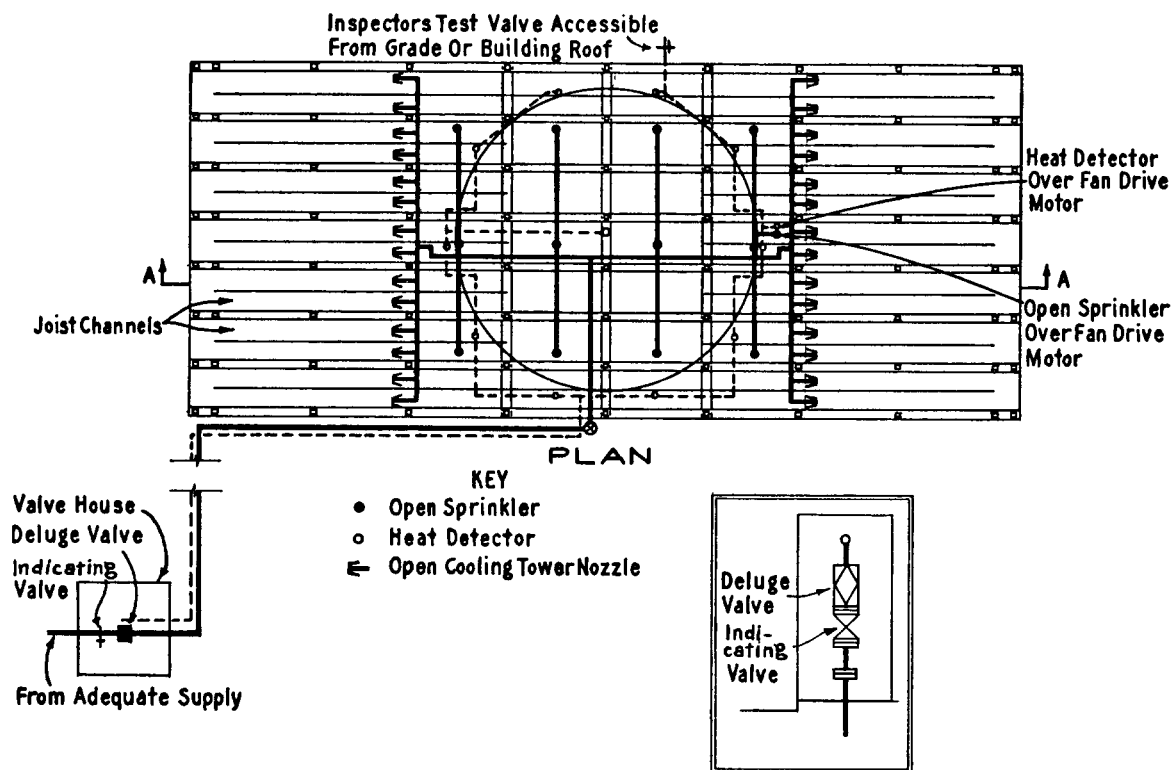


Figure B-9 Typical deluge fire protection arrangement for crossflow towers.

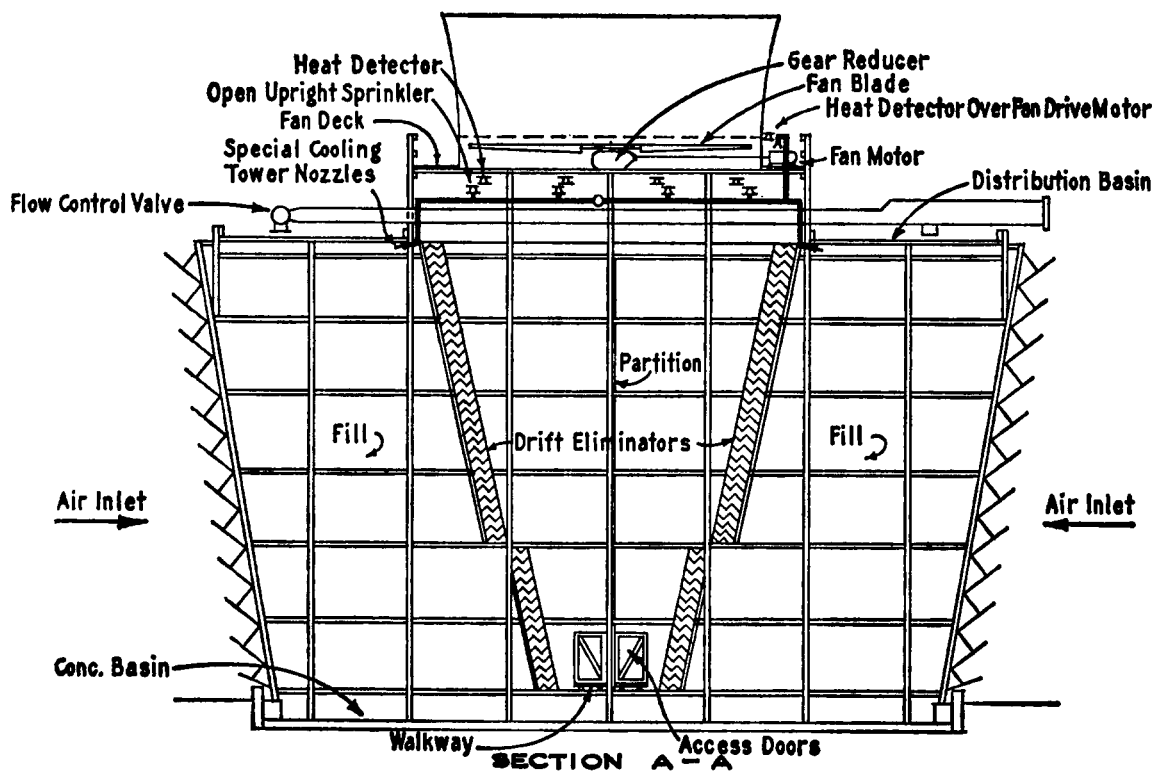


Figure B-10 Typical deluge fire protection arrangement for crossflow towers.

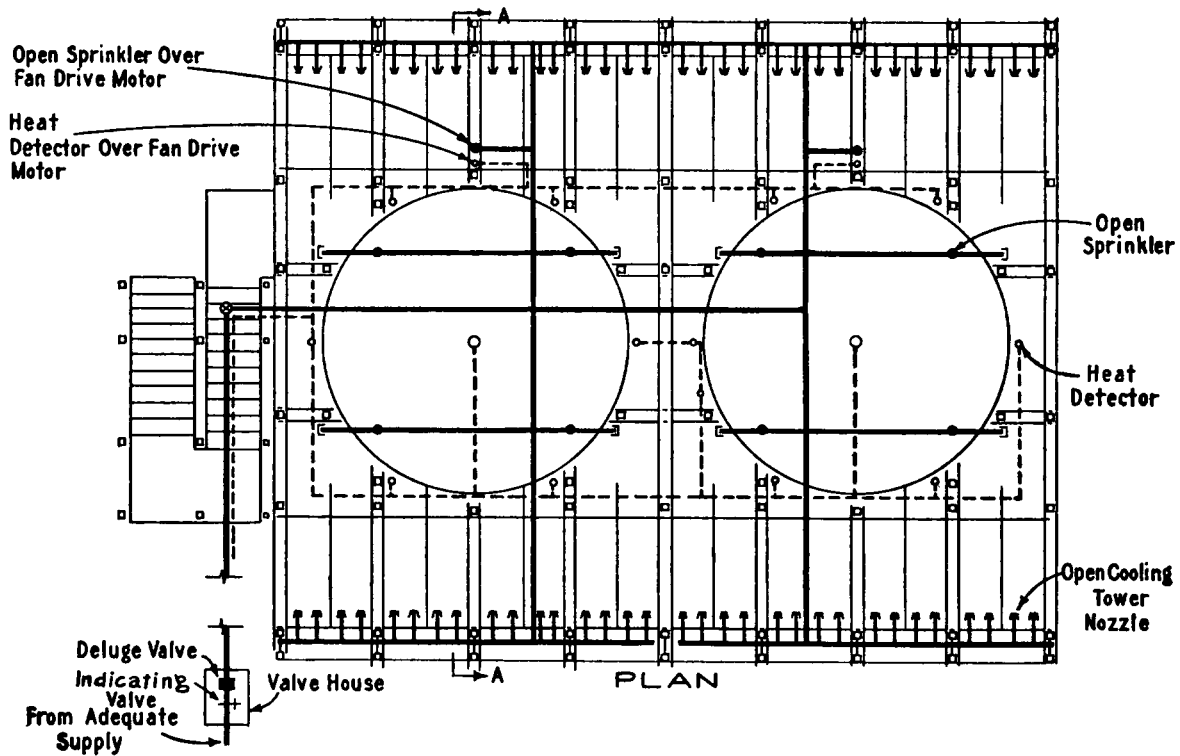


Figure B-11 Typical deluge fire protection arrangement for crossflow towers. (See Note following caption of Figure B-12.)

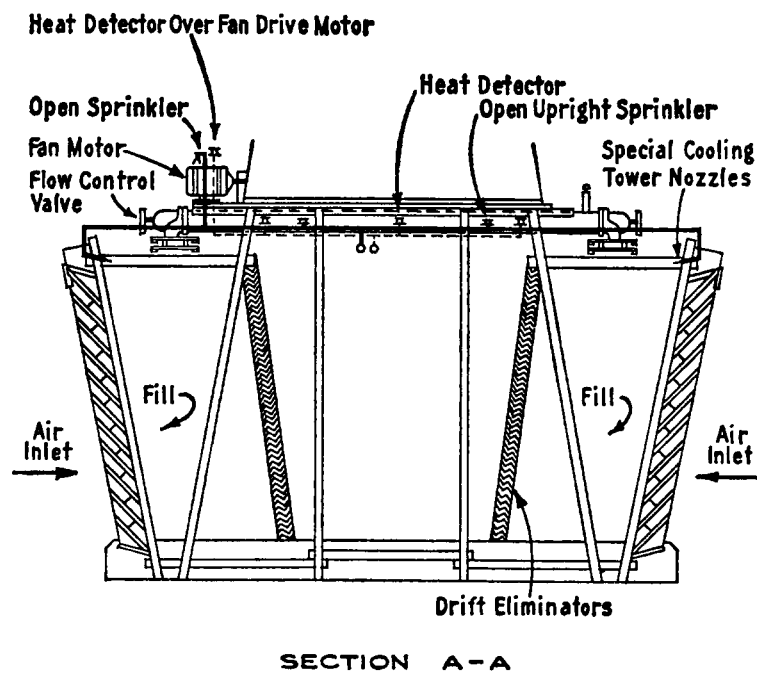


Figure B-12 Typical deluge fire protection arrangement for crossflow towers.

NOTE: Where air seal boards prevent installation of cooling tower nozzles on drift eliminator side of fill, this nozzle location should be used.

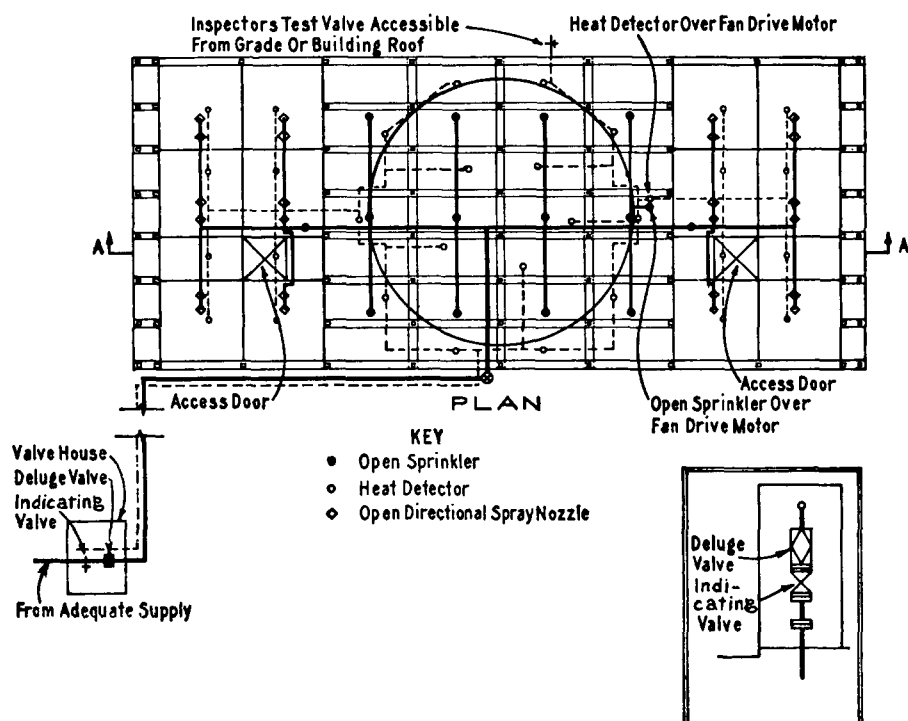


Figure B-13 Typical deluge fire protection arrangement for crossflow towers with completely enclosed distribution basins.

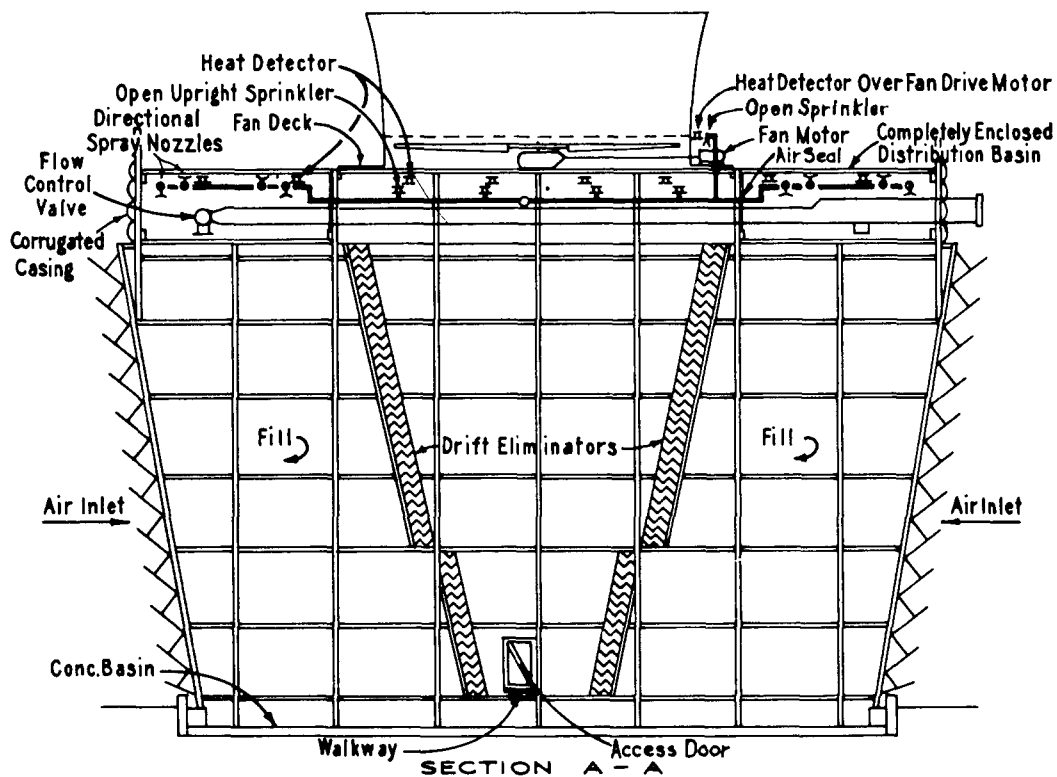


Figure B-14 Typical deluge fire protection arrangement for crossflow towers with completely enclosed distribution basins.

Appendix C Referenced Publications

C-1 The following documents or portions thereof are referenced within this standard for informational purposes only and thus are not considered part of the requirements of this document. The edition indicated for each reference is the current edition as of the date of the NFPA issuance of this document.

C-1.1 NFPA Publication. National Fire Protection Association, Batterymarch Park, Quincy, MA 02269.

NFPA 13A-1987, *Recommended Practice for the Inspection, Testing, and Maintenance of Sprinkler Systems*.

Index

© 1988 National Fire Protection Association, All Rights Reserved.

The copyright in this index is separate and distinct from the copyright in the document which it indexes. The licensing provisions set forth for the document are not applicable to this index. This index may not be reproduced in whole or in part by any means without the express written permission of the National Fire Protection Association, Inc.

<p>-A-</p> <p>Air travel</p> <p> Definition 1-2</p>	<p>-L-</p> <p>Lightning protection 5-7, A-5-7</p> <p>Location of cooling towers Chap. 2</p>
<p>-C-</p> <p>Classification of cooling towers Figs. B-1 thru B-4</p> <p>Combustible</p> <p> Definition 1-2</p> <p>Corrosion protection 5-3</p> <p>Counterflow (tower) Figs. B-3, B-5 thru B-8</p> <p> Definition 1-2</p> <p>Crossflow (tower) Figs. B-4, Figs. B-9 thru B-14</p> <p> Definition 1-2</p>	<p>-M-</p> <p>Maintenance Chap. 6, A-6-6</p> <p>Mechanical-draft (towers) Fig. B-2</p> <p> Definition 1-2</p> <p>-N-</p> <p>Natural-draft (towers) Fig. B-1</p> <p> Definition 1-2</p> <p>Noncombustible</p> <p> Definition 1-3</p>
<p>-D-</p> <p>Detectors, heat 5-2.8, A-5-2.8</p> <p>Discharge outlets, types and locations of 5-2.3, A-5-2.3.3</p>	<p>-O-</p> <p>Open areas (spaces) under towers 2-6, A-2-6</p>
<p>-E-</p> <p>Earthquake protection 5-8</p> <p>Electrical equipment and wiring Chap. 3, A-3-2</p> <p>Exposure protection 5-2.10</p>	<p>-P-</p> <p>Pipe and fittings 5-2.4, 5-3.1, A-5-2.4.1</p>
<p>-F-</p> <p>Fan drive motor, protection for 5-2.9</p> <p>Fans, internal combustion engine driven Chap. 4</p> <p>Fire protection Chap. 5</p> <p> Factors in 5-1.1, A-5-1.1</p> <p> Plans and data required 5-1.3</p> <p>Fire protection systems</p> <p> Design 5-1.2, 5-2, A-5-1.2</p> <p> Minimum rate of application 5-2.2</p> <p> Types of systems 5-1.2, 5-2.1, A-5-1.2</p>	<p>-S-</p> <p>Scope of standard 1-1</p> <p>Standpipe protection 5-5, A-5-5</p> <p>Strainers 5-2.7</p>
<p>-H-</p> <p>Hangers 5-2.5, A-5-2.1</p> <p>Heat detectors see Detectors</p> <p>Hydrant protection 5-4, A-5-4</p>	<p>-V-</p> <p>Valves 5-2.6</p> <p> Automatically controlled 5-2.6.2</p> <p> Shutoff 5-2.6.1</p> <p>-W-</p> <p>Water supply 5-6, A-5-6.1</p> <p>Wiring see Electrical equipment and wiring</p>

SUBMITTING PROPOSALS ON NFPA TECHNICAL COMMITTEE DOCUMENTS

**Contact NFPA Standards Administration for final date for receipt of proposals
on a specific document.**

INSTRUCTIONS

**Please use the forms which follow for submitting proposed amendments.
Use a separate form for each proposal.**

1. For each document on which you are proposing amendment indicate:
 - (a) The number and title of the document
 - (b) The specific section or paragraph.
2. Check the box indicating whether or not this proposal recommends new text, revised text, or to delete text.
3. In the space identified as "Proposal" include the wording you propose as new or revised text, or indicate if you wish to delete text.
4. In the space titled "Statement of Problem and Substantiation for Proposal" state the problem which will be resolved by your recommendation and give the specific reason for your proposal including copies of tests, research papers, fire experience, etc. If a statement is more than 200 words in length, the technical committee is authorized to abstract it for the Technical Committee Report.
5. Check the box indicating whether or not this proposal is original material, and if it is not, indicate source.
6. If supplementary material (photographs, diagrams, reports, etc.) is included, you may be required to submit sufficient copies for all members and alternates of the technical committee.

NOTE: The NFPA Regulations Governing Committee Projects in Paragraph 10-10 state: Each proposal shall be submitted to the Council Secretary and shall include:

- (a) identification of the submitter and his affiliation (Committee, organization, company) where appropriate, and
- (b) identification of the document, paragraph of the document to which the proposal is directed, and
- (c) a statement of the problem and substantiation for the proposal. and
- (d) proposed text of proposal, including the wording to be added, revised (and how revised), or deleted.

FORM FOR PROPOSALS ON NFPA TECHNICAL COMMITTEE DOCUMENTS

Mail to: Secretary, Standards Council

National Fire Protection Association, Batterymarch Park, Quincy, Massachusetts 02269

Date 5/18/85 Name John B. Smith Tel. No. 617-555-1212

Address 9 Seattle St., Seattle, WA 02255

Representing (Please indicate organization, company or self) Fire Marshals Assn. of North America

1. a) Document Title: Protective Signaling Systems NFPA No. & Year NFPA 72D

b) Section/Paragraph: 2-7.1 (Exception)

2. Proposal recommends: (Check one) ☐ new text
☐ revised text
☒ deleted text.

3. Proposal (include proposed new or revised wording, or identification of wording to be deleted):

Delete exception.

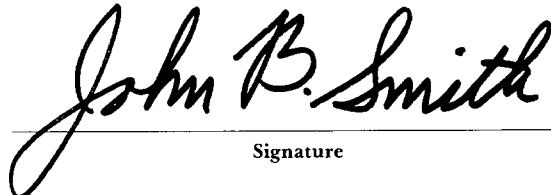
4. Statement of Problem and Substantiation for Proposal:

A properly installed and maintained system should be free of ground faults. The occurrence of one or more ground faults should be required to cause a "trouble" signal because it indicates a condition that could contribute to future malfunction of the system. Ground fault protection has been widely available on these systems for years and its cost is negligible. Requiring it on all systems will promote better installations, maintenance and reliability.

5. ☒ This Proposal is original material.
☐ This Proposal is not original material; its source (if known) is as follows: _____

(Note: Original material is considered to be the submitter's own idea based on or as a result of his own experience, thought, or research and, to the best of his knowledge, is not copied from another source.)

I agree to give NFPA all and full rights, including rights of copyright, in this Proposal and I understand that I acquire no rights in any publication of NFPA in which this Proposal in this or another similar or analogous form is used.


Signature

PLEASE USE SEPARATE FORM FOR EACH PROPOSAL