

AS4807

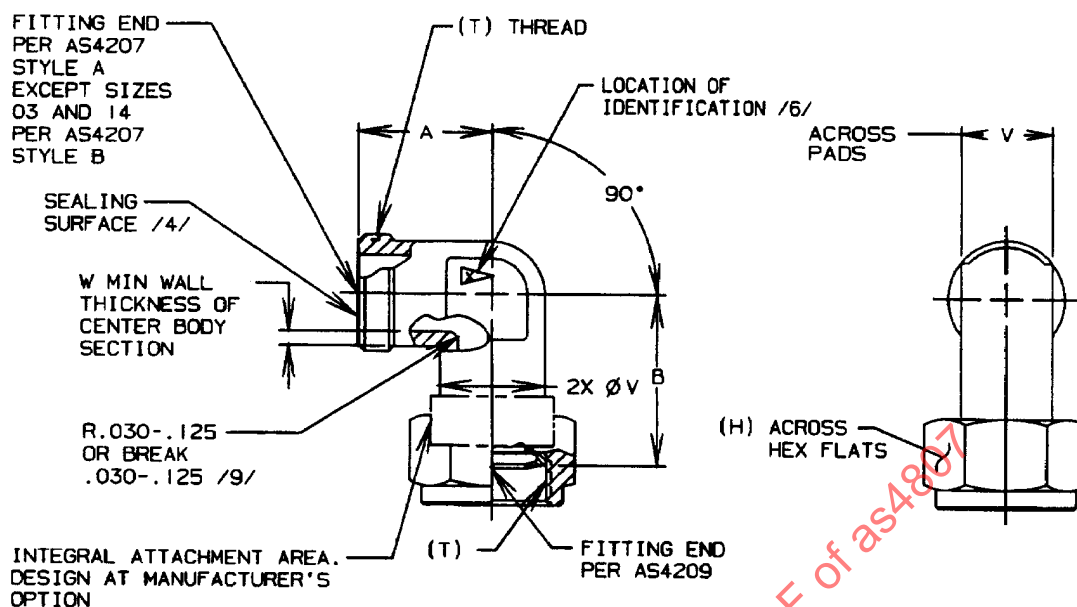
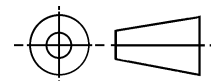


FIGURE 1 - FITTING ASSEMBLY, ELBOW, 90°

TABLE 1 - DIMENSIONS AND WEIGHTS

BASIC NO. AS4807	(NOMINAL TUBE SIZE)	T THREAD PER MIL-S-8879 CLASSES A AND B	A	B	H	V	W	LB/EA MAX CRES	LB/EA MAX TI
SIZE CODE									
03	.188	.3750-28 UNJS	.575	.781	.500	.360-.377	.055	.0480	.0274
04	.250	.4375-24 UNJS	.617	.808	.562	.360-.377	.060	.0554	.0317
05	.312	.5000-24 UNJS	.653	.850	.625	.423-.440	.060	.0716	.0409
06	.375	.5625-20 UNJS	.704	.945	.688	.485-.502	.060	.0894	.0511
08	.500	.7188-20 UNJS	.824	1.045	.875	.547-.565	.065	.129	.0738
10	.625	.8438-18 UNJS	.955	1.178	1.000	.673-.681	.070	.183	.105
12	.750	1.0000-16 UNJ	1.062	1.316	1.125	.860-.878	.095	.271	.155
14	.875	1.1250-16 UNJ	1.216	1.514	1.375	1.110-1.128	.105	.541	.309
16	1.000	1.2500-14 UNJS	1.246	1.529	1.500	1.110-1.128	.115	.509	.291
20	1.250	1.5781-14 UNJS	1.387	1.847	1.875	1.355-1.380	.110	.788	.450
24	1.500	1.8438-14 UNJS	1.688	2.171	2.125	1.605-1.630	.130	1.20	.683

THIRD ANGLE PROJECTION



CUSTODIAN: SAE G-3/G-3B

PROCUREMENT SPECIFICATION: /5/ MIL-F-85421, MIL-F-85720

SAE The Engineering Society
For Advancing Mobility
Land Sea Air and Space®
INTERNATIONAL
400 Commonwealth Drive, Warrendale, PA 15096-0001

AEROSPACE STANDARDFITTING ASSEMBLY, ELBOW, 90°,
BEAM SEAL, RETAINED NUT**AS4807**
SHEET 1 OF 2