

AS5003

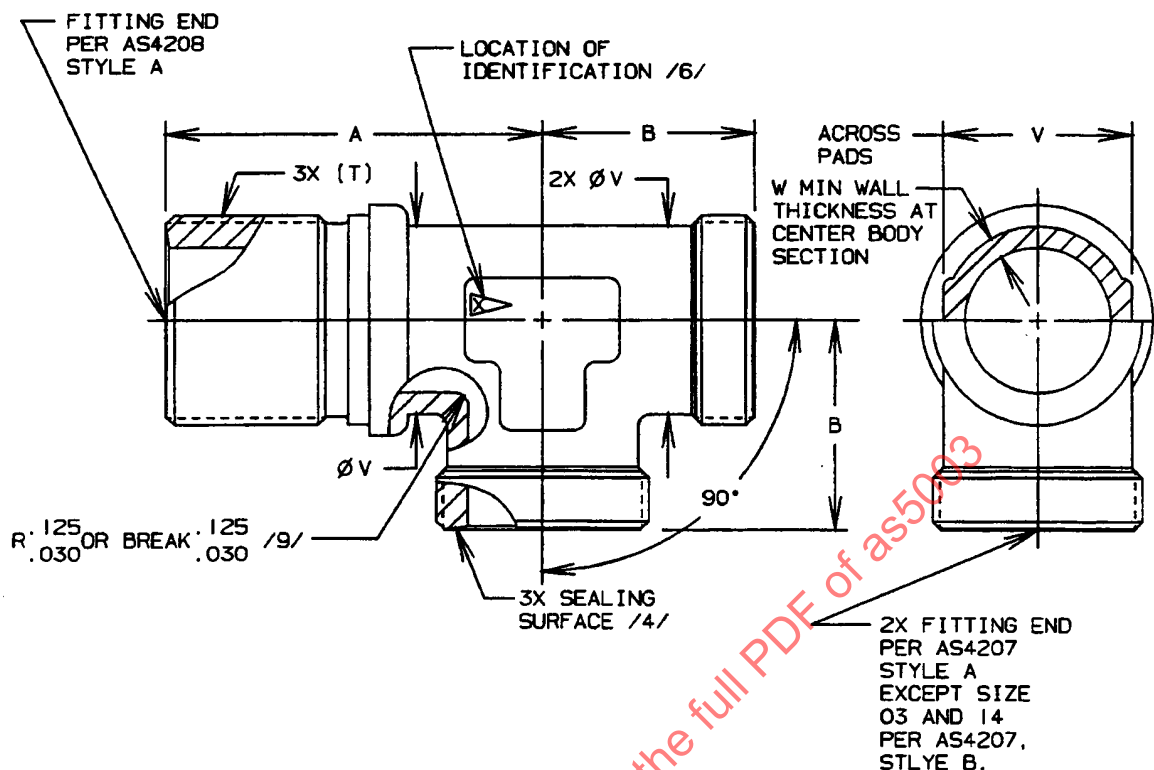
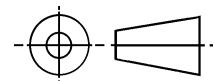


FIGURE 1 - FITTING, TEE, BULKHEAD ON RUN

TABLE 1 - DIMENSIONS AND WEIGHTS

BASIC NO. AS5003 /15/ SIZE CODE	(NOMINAL TUBE SIZE)	T THREAD PER MIL-S-8879 CLASS A	A	B	V	W	LB/EA MAX CRES	LB/EA MAX TI
03	.188	.3750-28 UNJS	1.143	.575	.360-.377	.055	.0610	.0349
04	.250	.4375-24 UNJS	1.225	.617	.360-.377	.060	.0759	.0434
05	.312	.5000-24 UNJS	1.261	.653	.423-.440	.060	.0977	.0558
06	.375	.5625-20 UNJS	1.353	.704	.485-.502	.060	.123	.0702
08	.500	.7188-20 UNJS	1.542	.824	.547-.565	.065	.187	.107
10	.625	.8438-18 UNJS	1.769	.955	.673-.691	.070	.275	.157
12	.750	1.0000-16 UNJ	1.953	1.062	.860-.878	.095	.416	.238
14	.875	1.1250-16 UNJ	2.188	1.216	1.110-1.128	.105	.682	.390
16	1.000	1.2500-14 UNJS	2.188	1.246	1.110-1.128	.110	.681	.389
20	1.250	1.5781-14 UNJS	2.326	1.387	1.355-1.380	.110	1.03	.587
24	1.500	1.8438-14 UNJS	2.712	1.688	1.605-1.630	.130	1.59	.908

THIRD ANGLE PROJECTION



CUSTODIAN: SAE G-3/G-3B

PROCUREMENT SPECIFICATION: /5/ MIL-F-85421, MIL-F-85720

SAE The Engineering Society
For Advancing Mobility
Land Sea Air and Space
INTERNATIONAL
400 Commonwealth Drive, Warrendale, PA 15096-0001

AEROSPACE STANDARD

FITTING, TEE, BEAM SEAL
BULKHEAD ON RUNAS5003
SHEET 1 OF 2