

AS5179

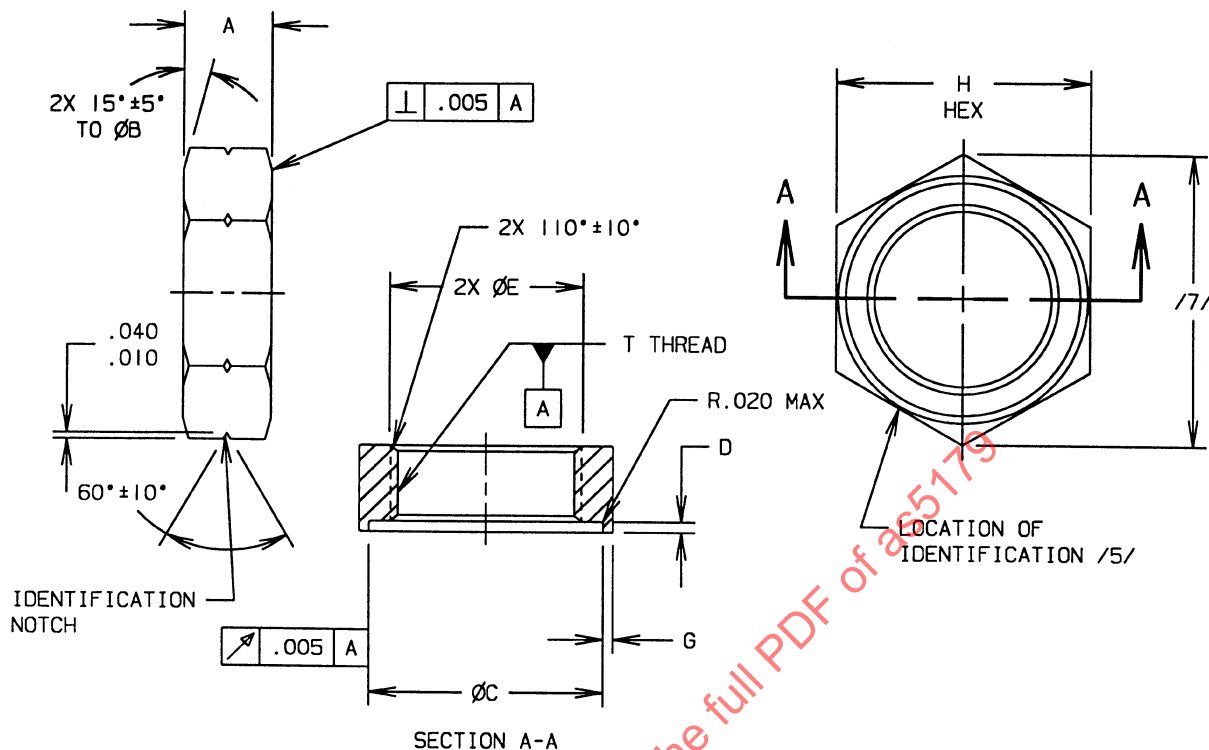
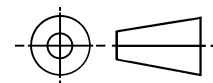


FIGURE 1 - FITTING, NUT

TABLE 1 - DIMENSIONS AND WEIGHTS

BASIC NO. AS5179	(NOMINAL TUBE SIZE)	T THREAD PER AS8879 CLASS 3B	A	B ±.010	C ±.005	D ±.005	E ±.010	G MIN	H	LB/100 APPROX REF AL	LB/100 APPROX REF STEEL	LB/100 APPROX REF TI
02	.125	.3125-24 UNJF	.250	.542	.483	.037	.323	.032	.552-.565	.522	1.49	.827
03	.188	.3750-24 UNJF	.250	.605	.546	.037	.385	.032	.615-.628	.606	1.74	.963
04	.250	.4375-20 UNJF	.281	.668	.608	.042	.448	.032	.678-.691	.786	2.26	1.24
05	.312	.5000-20 UNJF	.281	.730	.670	.042	.510	.032	.740-.753	.882	2.53	1.40
06	.375	.5625-18 UNJF	.297	.793	.733	.042	.573	.032	.803-.816	1.04	3.00	1.66
08	.500	.7500-16 UNJF	.344	.980	.920	.042	.760	.032	.990-1.003	1.61	4.63	2.55
10	.625	.8750-14 UNJF	.391	1.103	1.045	.054	.885	.032	1.113-1.128	2.16	6.21	3.43
12	.750	1.0625-12 UNJ	.438	1.352	1.295	.054	1.073	.032	1.362-1.380	3.65	10.5	5.77
16	1.000	1.3125-12 UNJ	.438	1.603	1.541	.054	1.323	.027	1.613-1.630	4.55	13.1	7.20
20	1.250	1.6250-12 UNJ	.438	1.916	1.854	.054	1.635	.027	1.926-1.943	5.72	16.5	9.09
24	1.500	1.8750-12 UNJ	.438	2.162	2.104	.054	1.885	.027	2.172-2.198	6.71	19.3	10.6
28	1.750	2.2500-12 UNJ	.438	2.536	2.478	.054	2.260	.027	2.546-2.572	8.26	23.8	13.1
32	2.000	2.5000-12 UNJ	.438	2.787	2.728	.054	2.510	.027	2.797-2.823	9.36	26.9	14.9

THIRD ANGLE PROJECTION



CUSTODIAN: SAE G-3/G-3B

PROCUREMENT SPECIFICATION: /4/ AS4841

SAE The Engineering Society
For Advancing Mobility
Land Sea Air and Space®
INTERNATIONAL
400 Commonwealth Drive, Warrendale, PA 15096-0001

AEROSPACE STANDARD

NUT, FITTING, PORT

AS5179
SHEET 1 OF 2

ISSUED 1999-01