

SAE Technical Standards Board Rules provide that: "This report is published by SAE to advance the state of technical and engineering sciences. The use of this report is entirely voluntary, and its applicability and suitability for any particular use, including any patent infringement arising therefrom, is the sole responsibility of the user."

SAE reviews each technical report at least every five years at which time it may be reaffirmed, revised, or cancelled. SAE invites your written comments and suggestions.

AS9399

FEDERAL SUPPLY CLASS
5306

NOTICE

THIS DOCUMENT HAS BEEN TAKEN DIRECTLY FROM U.S. MILITARY SPECIFICATION MS9399 (ASG) AND CONTAINS ONLY MINOR EDITORIAL AND FORMAT CHANGES REQUIRED TO BRING IT INTO CONFORMANCE WITH THE PUBLISHING REQUIREMENTS OF SAE TECHNICAL STANDARDS. THE INITIAL RELEASE OF THIS DOCUMENT IS INTENDED TO REPLACE MS9399 (ASG). ANY PART NUMBERS ESTABLISHED BY THE ORIGINAL SPECIFICATION REMAIN UNCHANGED.

THE ORIGINAL MILITARY SPECIFICATION WAS ADOPTED AS AN SAE STANDARD UNDER THE PROVISIONS OF THE SAE TECHNICAL STANDARDS BOARD (TSB) RULES AND REGULATIONS (TSB 001) PERTAINING TO ACCELERATED ADOPTION OF GOVERNMENT SPECIFICATIONS AND STANDARDS. TSB RULES PROVIDE FOR (A) THE PUBLICATION OF PORTIONS OF UNREVISED GOVERNMENT SPECIFICATIONS AND STANDARDS WITHOUT CONSENSUS VOTING AT THE SAE COMMITTEE LEVEL, AND (B) THE USE OF THE EXISTING GOVERNMENT SPECIFICATION OR STANDARD FORMAT.

UNDER DEPARTMENT OF DEFENSE POLICIES AND PROCEDURES, ANY QUALIFICATION REQUIREMENTS AND ASSOCIATED QUALIFIED PRODUCTS LISTS ARE MANDATORY FOR DOD CONTRACTS. ANY REQUIREMENT RELATING TO QUALIFIED PRODUCTS LISTS (QPL'S) HAS NOT BEEN ADOPTED BY SAE AND IS NOT PART OF THIS SAE TECHNICAL DOCUMENT.

SAENORM.COM : Click to view the full PDF of as9399

ISSUED 2001-10

PREPARED BY SAE COMMITTEE E-25, GENERAL STANDARDS FOR AEROSPACE PROPULSION SYSTEMS

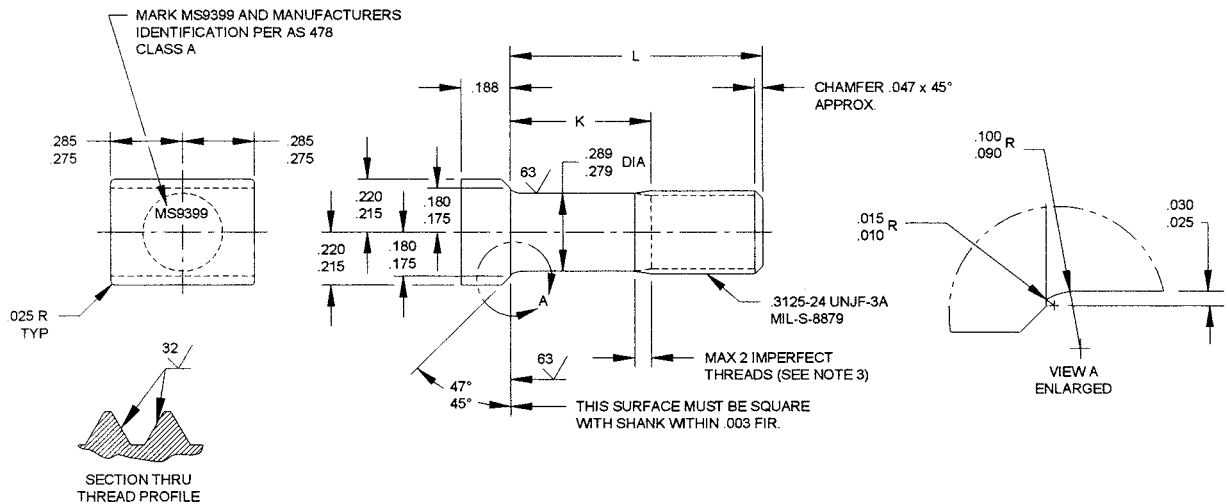
SAE The Engineering Society
For Advancing Mobility
Land Sea Air and Space®
INTERNATIONAL
400 Commonwealth Drive, Warrendale, PA 15096-0001

AEROSPACE STANDARD

BOLT, TEE HEAD - AMS 6322, CHAMFERED,
.3125-24 UNJF-3A, CADMIUM PLATE

AS9399
SHEET 1 OF 3

AS9399



1. SHANK SHALL BE STRAIGHT WITHIN .003 FIR. PER INCH OF BOLT LENGTH.
2. THE CONCENTRICITY OF THREAD PD IN RELATION TO THE SHANK SHALL BE WITHIN .006 FIR.
3. INCOMPLETE THREADS NOT TO ENTER THE FILLET AREA.
4. HEAD TO SHANK FILLET SHALL BE COLD ROLLED.
5. MATERIAL: STEEL AMS 6322. HARDNESS: ROCKWELL C26-32.
6. FINISH: CADMIUM PLATE AMS 2400. DIMENSIONS SPECIFIED ARE AFTER PLATING.
7. SURFACE ROUGHNESS: AS 291 UNLESS OTHERWISE SPECIFIED SURFACES TO BE 125 MICROINCHES

PART NUMBER	L	K	APPROX WEIGHT LB/100
MS9399-04	.500	.130-.150	2.17
MS9399-05	.562	.130-.150	2.26
MS9399-06	.625	.130-.150	2.39
MS9399-07	.688	.130-.150	2.50
MS9399-08	.750	.130-.150	2.61
MS9399-09	.812	.130-.150	2.72
MS9399-10	.875	.130-.150	2.84
MS9399-11	.938	.130-.150	2.95
MS9399-12	1.000	.130-.150	3.06
MS9399-13	1.062	.130-.150	3.18
MS9399-14	1.125	.190-.250	3.29
MS9399-15	1.188	.252-.312	3.40
MS9399-16	1.250	.315-.375	3.51
MS9399-17	1.312	.378-.438	3.63
MS9399-18	1.375	.440-.500	3.74
MS9399-19	1.438	.502-.562	3.85
MS9399-20	1.500	.565-.625	3.97
MS9399-21	1.562	.628-.688	4.08
MS9399-22	1.625	.690-.750	4.19
MS9399-23	1.688	.752-.812	4.30
MS9399-24	1.750	.815-.875	4.42
MS9399-25	1.875	.940-1.000	4.54
MS9399-26	2.000	1.065-1.125	4.87
MS9399-27	2.125	1.190-1.250	5.09
MS9399-28	2.250	1.315-1.375	5.32
MS9399-29	2.375	1.440-1.500	5.55
MS9399-30	2.500	1.565-1.625	5.77

PART NUMBER	L	K	APPROX WEIGHT LB/100
MS9399-31	2.625	1.690-1.750	6.00
MS9399-32	2.750	1.815-1.875	6.22
MS9399-33	2.875	1.940-2.000	6.45
MS9399-34	3.000	2.065-2.125	6.67
MS9399-35	3.125	2.190-2.250	6.90
MS9399-36	3.250	2.315-2.375	7.13
MS9399-37	3.375	2.440-2.500	7.35
MS9399-38	3.500	2.565-2.625	7.58
MS9399-39	3.625	2.690-2.750	7.80
MS9399-40	3.750	2.815-2.875	8.03
MS9399-41	3.875	2.940-3.000	8.25
MS9399-42	4.000	3.065-3.125	8.48
MS9399-43	4.125	3.190-3.250	8.71
MS9399-44	4.250	3.315-3.375	8.93
MS9399-45	4.375	3.440-3.500	9.16
MS9399-46	4.500	3.565-3.625	9.38
MS9399-47	4.625	3.690-3.750	9.61
MS9399-48	4.750	3.815-3.875	9.83
MS9399-49	4.875	3.940-4.000	10.06
MS9399-50	5.000	4.065-4.125	10.29
MS9399-51	5.125	4.190-4.250	10.51
MS9399-52	5.250	4.315-4.375	10.74
MS9399-53	5.375	4.440-4.500	10.96
MS9399-54	5.500	4.565-4.625	11.19
MS9399-55	5.625	4.690-4.750	11.41
MS9399-56	5.750	4.815-4.875	11.64
MS9399-57	5.875	4.940-5.000	11.86
MS9399-58	6.000	5.065-5.125	12.09